



# Alaska Department of Corrections



**FY2017**  
**Department Overview**  
**House Finance Sub-Committee**  
**January 29, 2016**

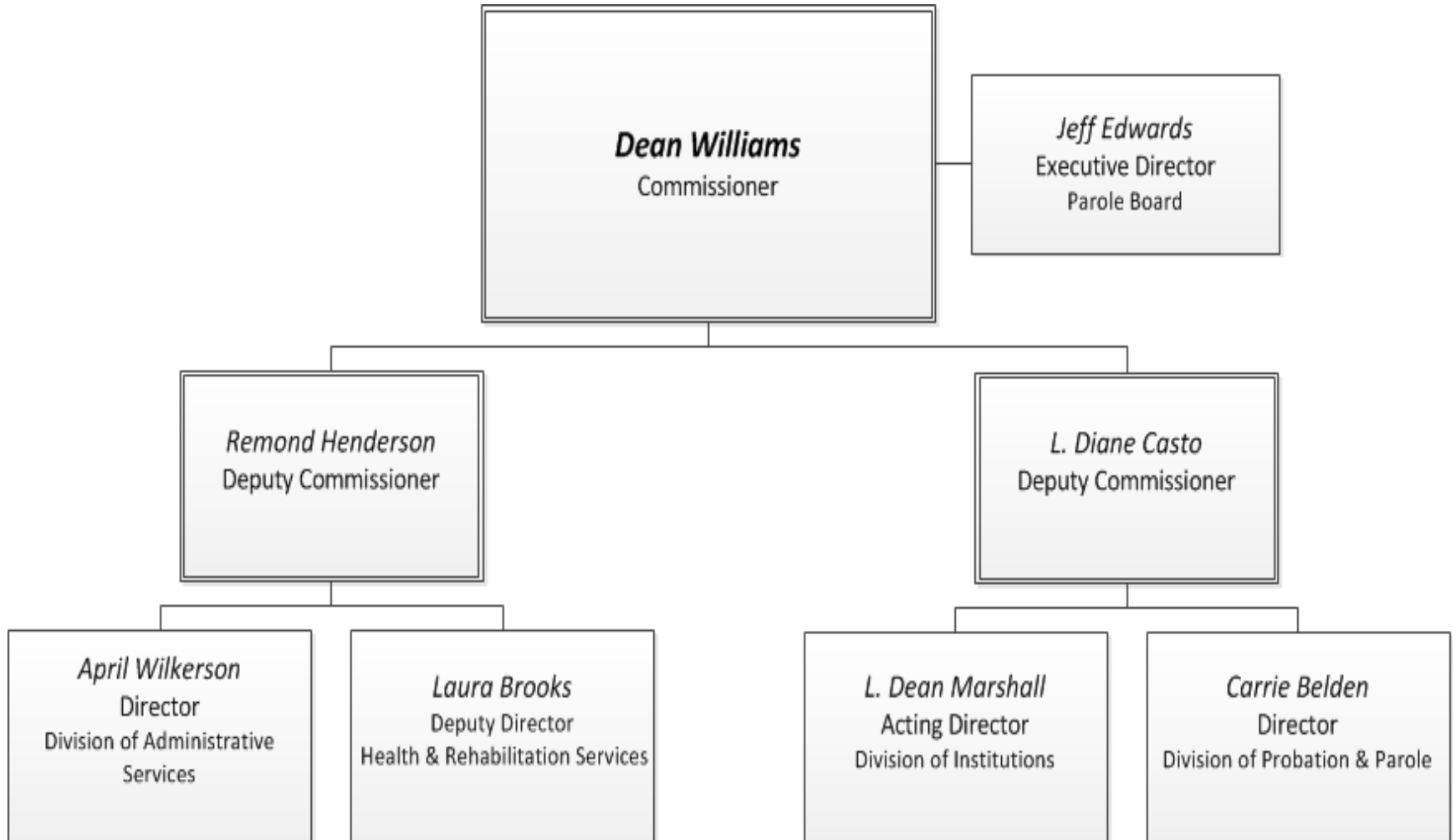
# Mission

---

The Alaska Department of Corrections enhances the safety of our communities. We provide secure confinement, reformatory programs, and a process of supervised community reintegration.

# Organizational Structure

---



# DOC at a Glance

---

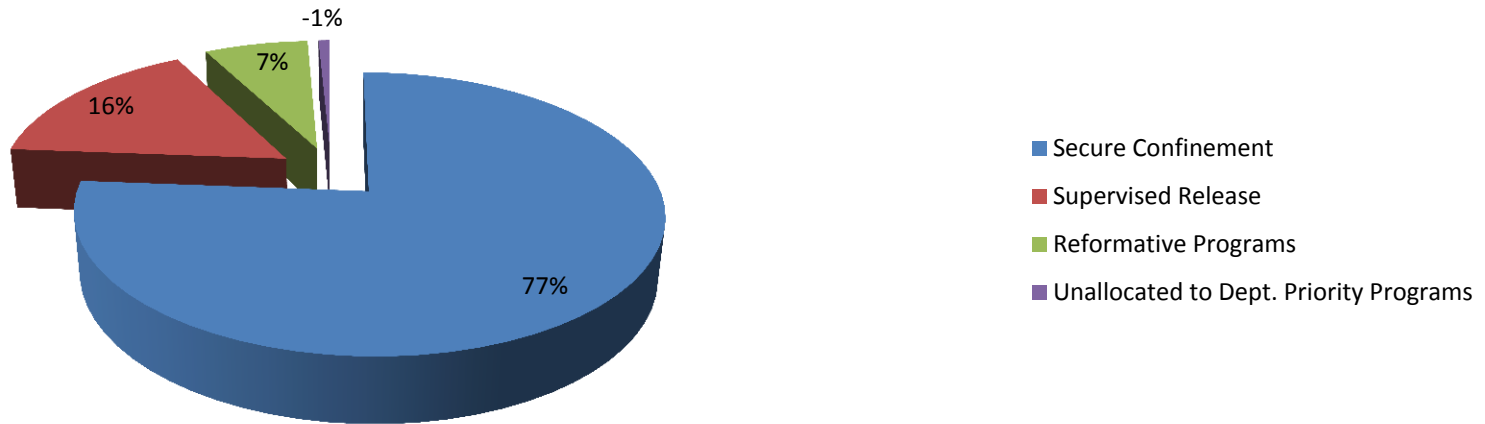
- Alaska is one of six states in the nation that operates a unified correctional system (*Alaska, Connecticut, Delaware, Hawaii, Rhode Island, and Vermont*)
- In FY2015, DOC booked 36,066 offenders into its facilities
  - 3,557 were non-criminal Title 47 bookings
    - (an increase of 5.4% over last year)
  - 21,705 were unique offenders
- As of June 30, 2015 6,044 offenders are in a prison, community residential center (CRC) or on electronic monitoring (EM)
- As of June 30, 2015 5,650 offenders are on probation or parole

# DOC at a Glance

---

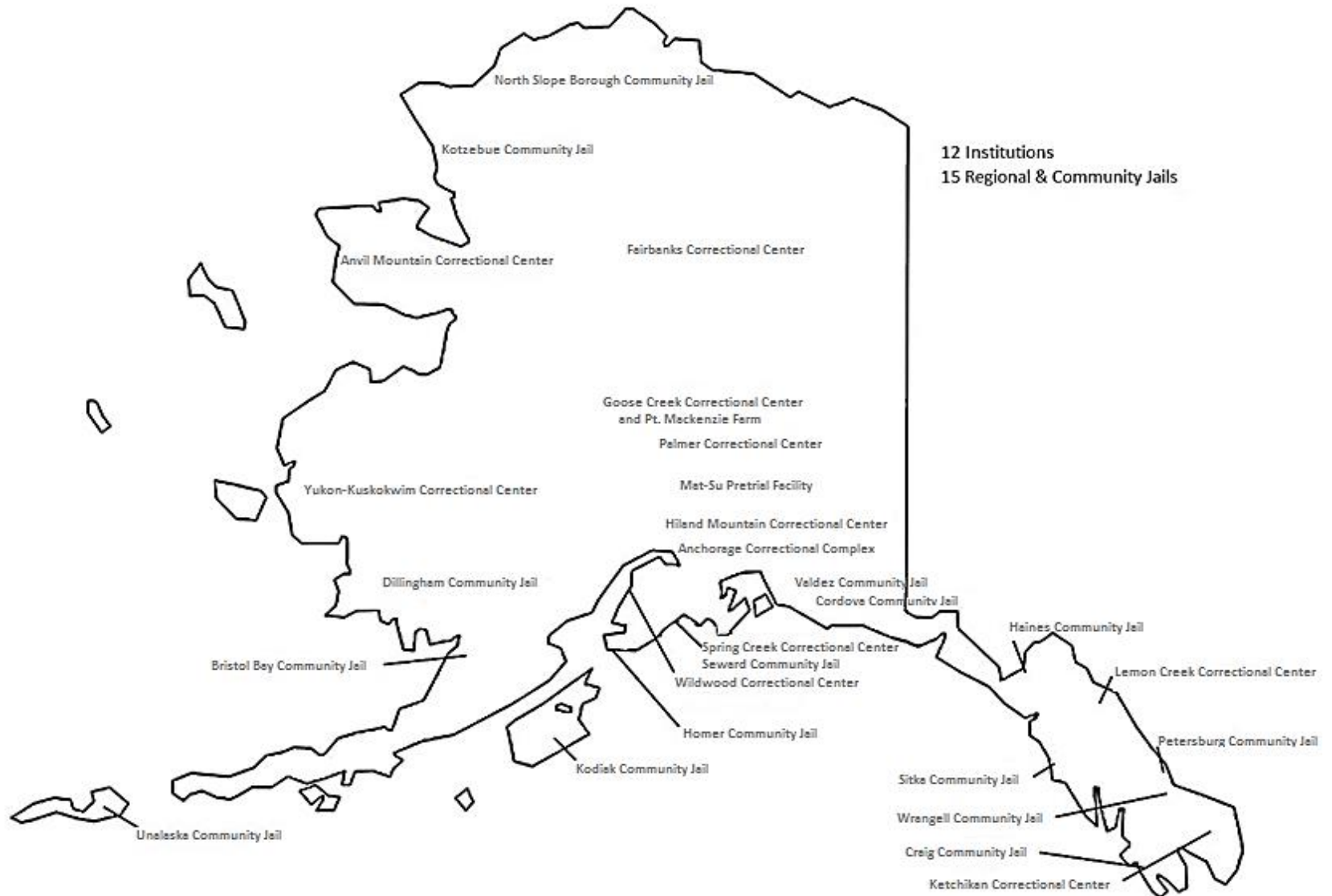
- Twelve facilities statewide with a total capacity of 5,352 beds
  - *Includes 128 beds located at Point Mackenzie Correctional Farm*
- Thirteen field probation offices statewide
- Eight contract CRCs with a capacity of 819 beds
- EM operates in six communities with a capacity of 450 *\*EM available through each Regional & Community Jail contracts*
- Fifteen regional and community jail contracts with a total capacity of 157 beds
- Reformatory Programming

# Operating Budget Request by Core Services

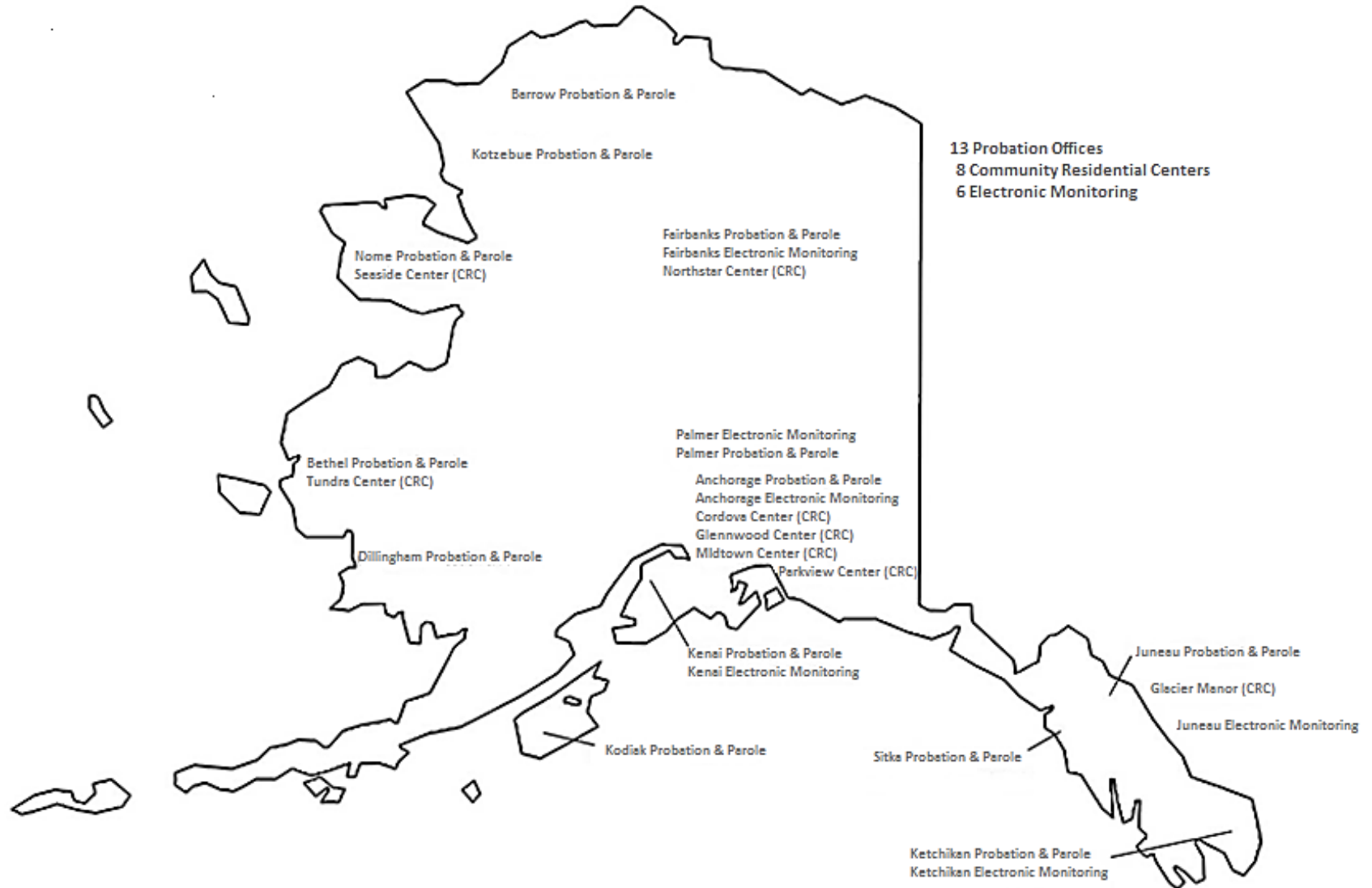


<i><b>Department of Corrections Core Services Allocations</b></i>	<b>Amount</b>	<b>PFT</b>
<i>Secure Confinement</i>	\$245,311.8	1,575
<i>Reformative Programs</i>	\$22,296.3	91
<i>Supervised Release</i>	\$51,842.2	205
<i>Unallocated to Dept. Priority Programs</i>	(\$2,450.1)	0
<b>Total</b>	<b>\$317,000.2</b>	<b>1,871</b>

# Secure Confinement



# Supervised Release





# Office of the Commissioner

---

- **Commissioner Office**
- **Training Academy**
- **Recidivism Reduction**
- **Offender Re-Entry**

<i><b>TOTAL</b></i>	<i><b>\$ 3,168.6</b></i>
UGF	\$ 3,168.6
DGF	\$ 0.0
Other	\$ 0.0
Federal	\$ 0.0

<i><b>Budgeted Positions</b></i>	<i><b>14</b></i>
PFT	14
PPT	0
Non Perm	0

# Division of Institutions

- Inmate Classification & Furlough
- Inmate Transportation Unit
- 12 Correctional Centers
- Return to Point of Arrest
- Education / Vocational Education Programs
- Regional and Community Jails

<i><b>TOTAL</b></i>	<i><b>\$ 212,271.9</b></i>
UGF	\$ 191,409.6
DGF	\$ 2,477.8
Other	\$ 13,153.4
Federal	\$ 5,231.1

<i><b>Budgeted Positions</b></i>	<i><b>1,404</b></i>
PFT	1,404
PPT	0
Non Perm	0

# Division of Health and Rehabilitation

---

- **Physical Health Care**
- **Behavioral Health Care**
- **Substance Abuse**
- **Sex Offender Management Program**
- **Domestic Violence**

<i><b>TOTAL</b></i>	<i><b>\$ 47,200.8</b></i>
UGF	\$ 26,054.8
DGF	\$ 20,321.9
Other	\$ 759.1
Federal	\$ 65.0

<i><b>Budgeted Positions</b></i>	<i><b>210</b></i>
PFT	210
PPT	0
Non Perm	0

# Division of Probation and Parole

- **Statewide Probation and Parole covering 13 regional locations**
- **Probation Accountability with Certain Enforcement ( PACE)**
- **Pre-sentencing Unit**
- **Inter-state Compact**
- **Electronic Monitoring within 6 locations**
- **Community Residential Centers within 5 locations**

<b><i>TOTAL</i></b>	<b><i>\$ 47,243.7</i></b>
UGF	\$ 43,275.4
DGF	\$ 3,894.7
Other	\$ 23.6
Federal	\$ 50.0

<b><i>Budgeted Positions</i></b>	<b><i>176</i></b>
PFT	176
PPT	0
Non Perm	0

# Board of Parole

- **Parole Board**
  - Discretionary
  - Mandatory
  - Special Medical
  - Clemency Investigations

**\* The Parole Board consists of 6 budgeted positions and 5 Governor appointed board members**

<i><b>TOTAL</b></i>	<i><b>\$ 1,019.4</b></i>
UGF	\$ 1,017.5
DGF	\$ 0.0
Other	\$ 1.9
Federal	\$ 0.0

<i><b>Budgeted Positions</b></i>	<i><b>6</b></i>
PFT	6
PPT	0
Non Perm	0

# Division of Administrative Services

- **Budget and Finance**
  - Inmate Banking and Auditing
- **Human Resources**
  - Alaska Police Standard Council Certification
  - Employee Background Investigations
- **Procurement**
  - Ignition Interlock Certification
- **Information Technology**
  - Alaska Corrections Offender Management System (ACOMS)
- **Research and Records**
  - Data Integrity
  - PFD Eligibility
- **Facilities Capital Unit**
  - OSHA Compliance

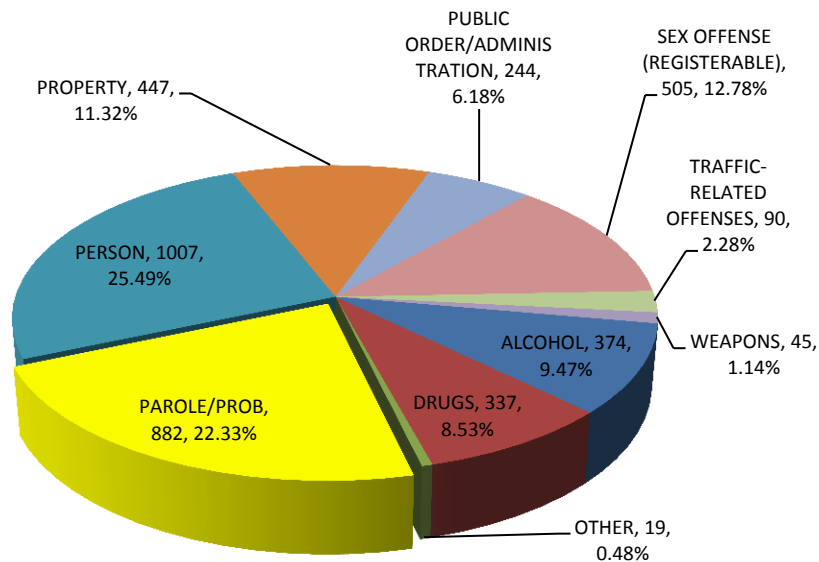
<i><b>TOTAL</b></i>	<i><b>\$ 8,545.9</b></i>
UGF	\$ 7,857.3
DGF	\$ 0.0
Other	\$ 539.8
Federal	\$ 148.8

<i><b>Budgeted Positions</b></i>	<i><b>61</b></i>
PFT	61
PPT	0
Non Perm	0

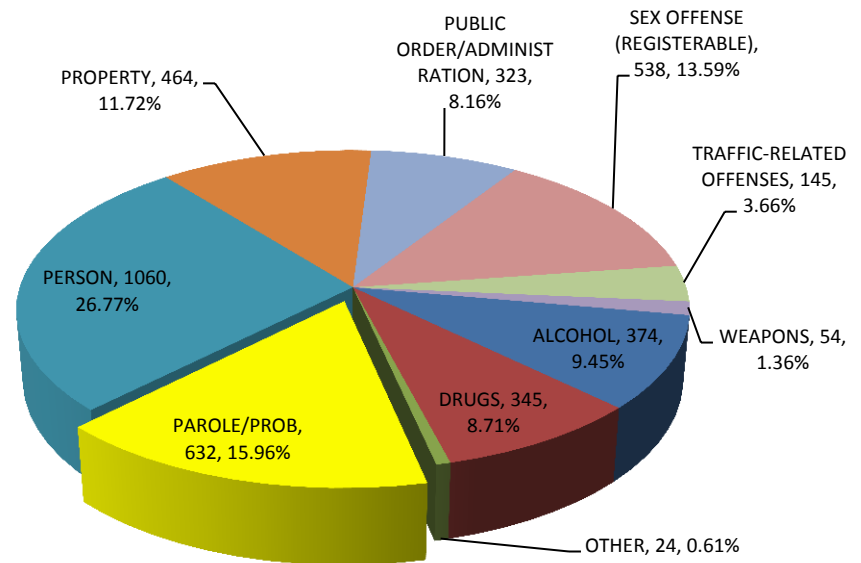
# Change in Sentenced Offender Population by Offense Class: 2013 – 2015

From September, 2013 to September, 2015 the only major offense class to see a reduction in offender population was Probation/Parole Violations

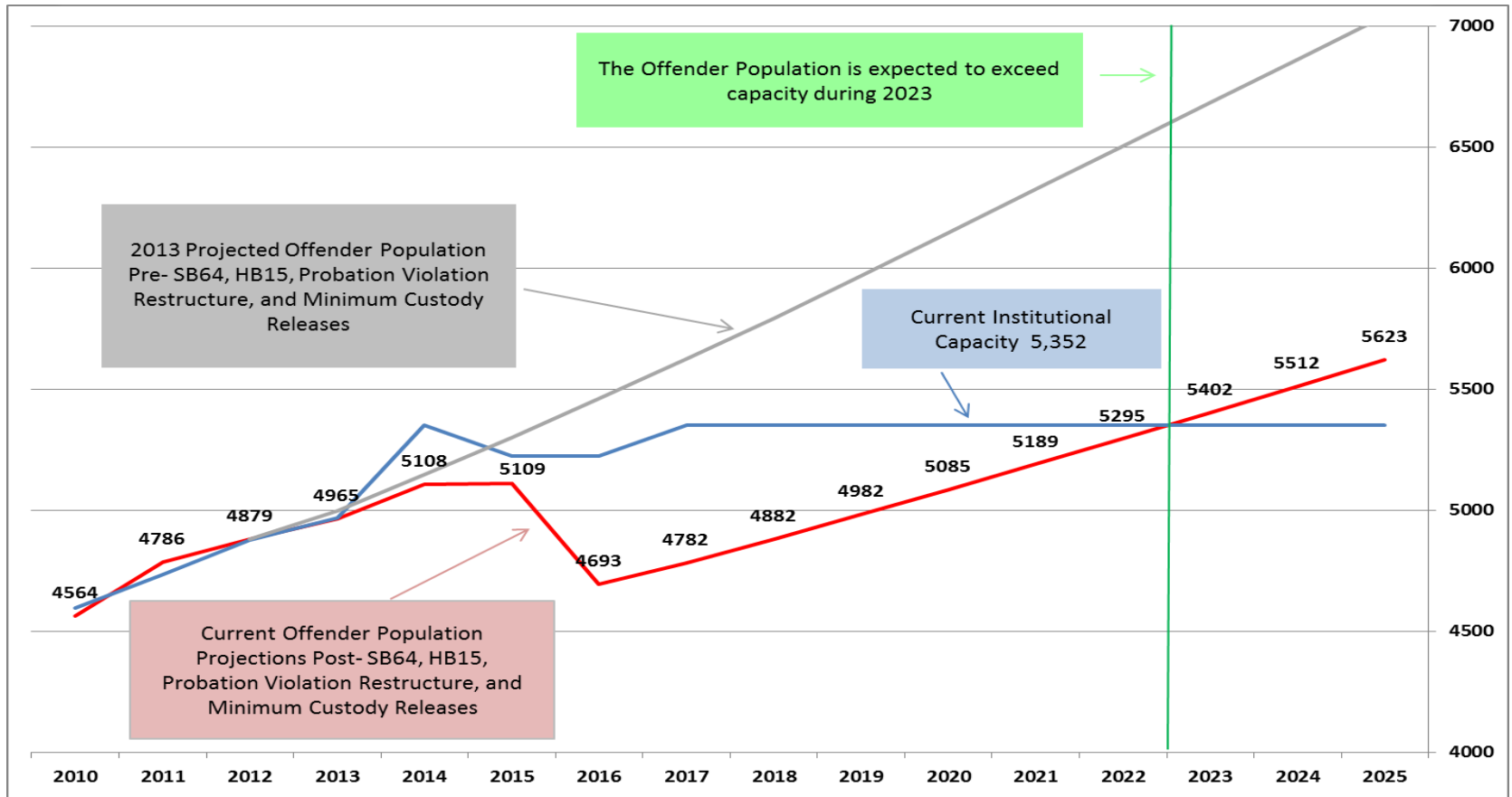
Offender Population by Offense Class in September of 2013



Offender Population by Offense Class in September of 2015



# Institutional Offender Population 2010 – 2025



Prison population is estimated to grow at an average of 1.02% annually for the next 5 years.

*\*Figures based on the adjusted average annual population*

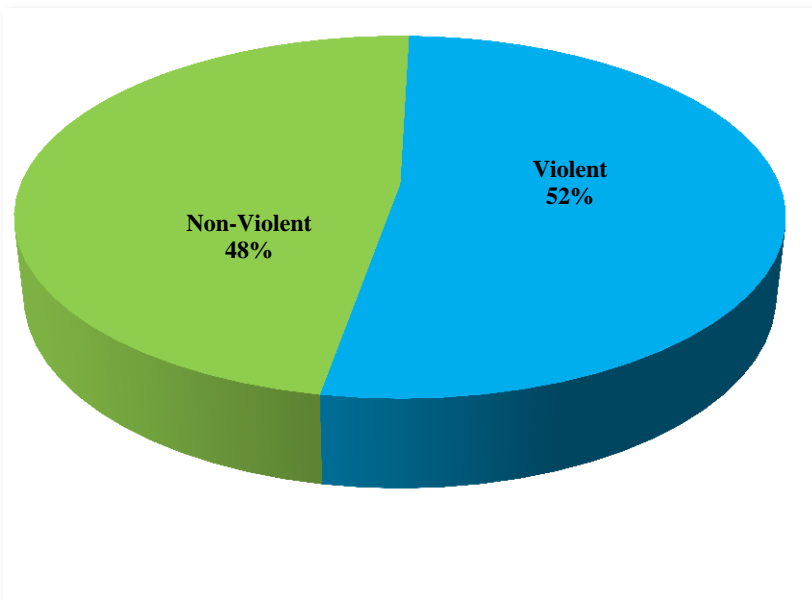
Note: The 2013 projections estimated the offender population would exceed capacity in 2015. Last year, DOC projected the population would exceed capacity in 2017. This year – due to the fruition of several organized efforts – the population is not expected to exceed capacity until 2023.



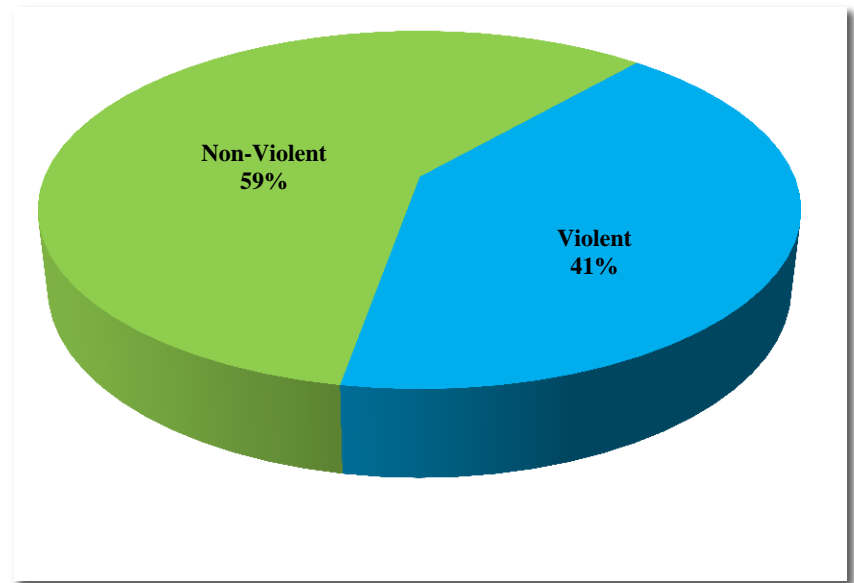
# Standing Population & Crime Type

---

As of June 30, 2002



As of June 30, 2015

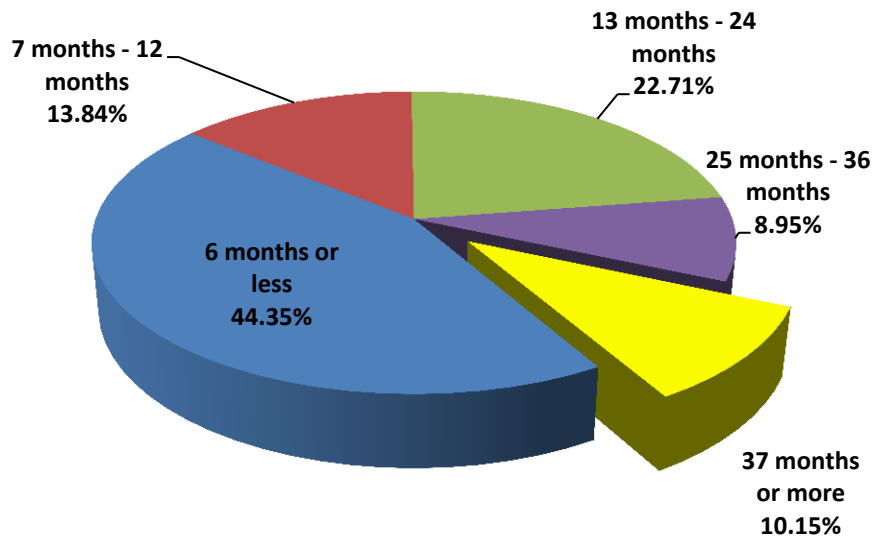


\* Violent Crimes include all crimes against a person and also includes registerable sex offenses.

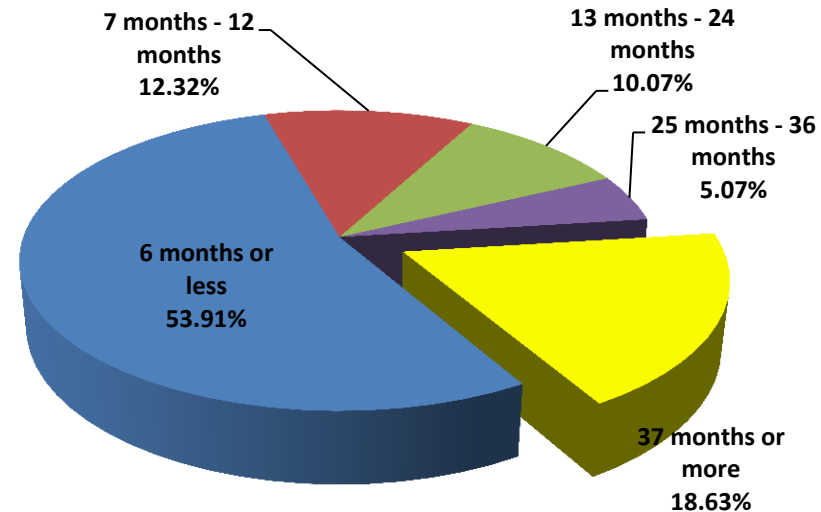
# Percent of Offenders by Length of Stay from Admission

---

As of June 30, 2002



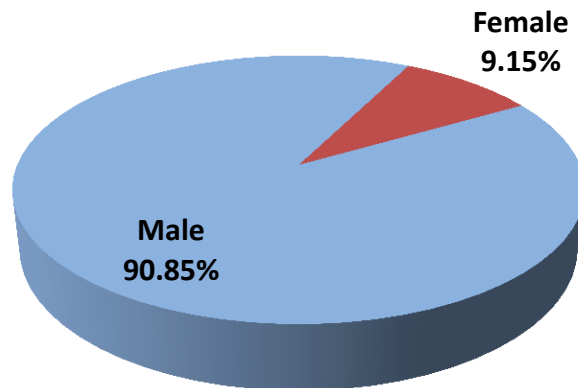
As of June 30, 2015



# Percent of Incarcerated Offenders by Gender

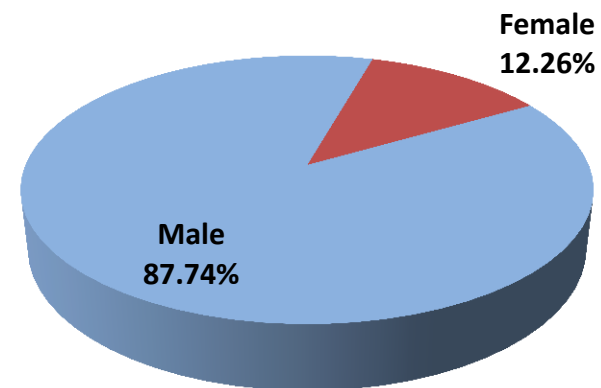
As of June 30, 2002

Percent of Offenders in Institutions by gender on June 30, 2002



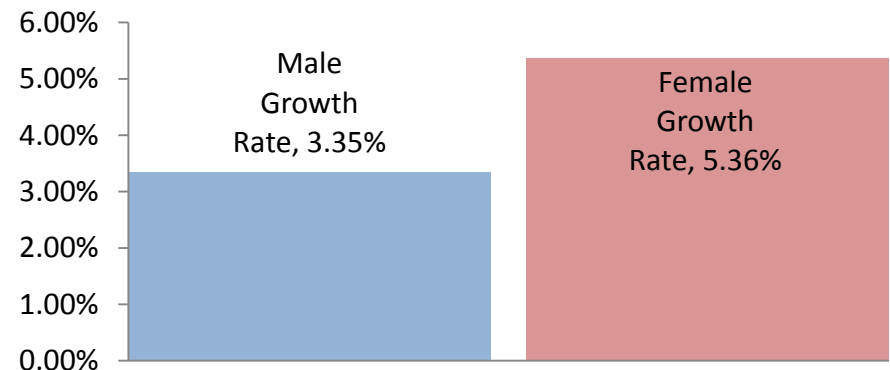
As of June 30, 2015

Percent of Offenders in Institutions by Sex on June 30, 2015



In 2002, Female offenders made up less than 10% of the total offender population held in institutions. In 2015 female offenders made up more than 12%. Since 2002 the female population growth rate is nearly double the male population growth rate making females one of the highest growing populations in Corrections.

Offender Growth Rate Since 2002 by Sex



Average Annual Growth Since 2002

# Goals

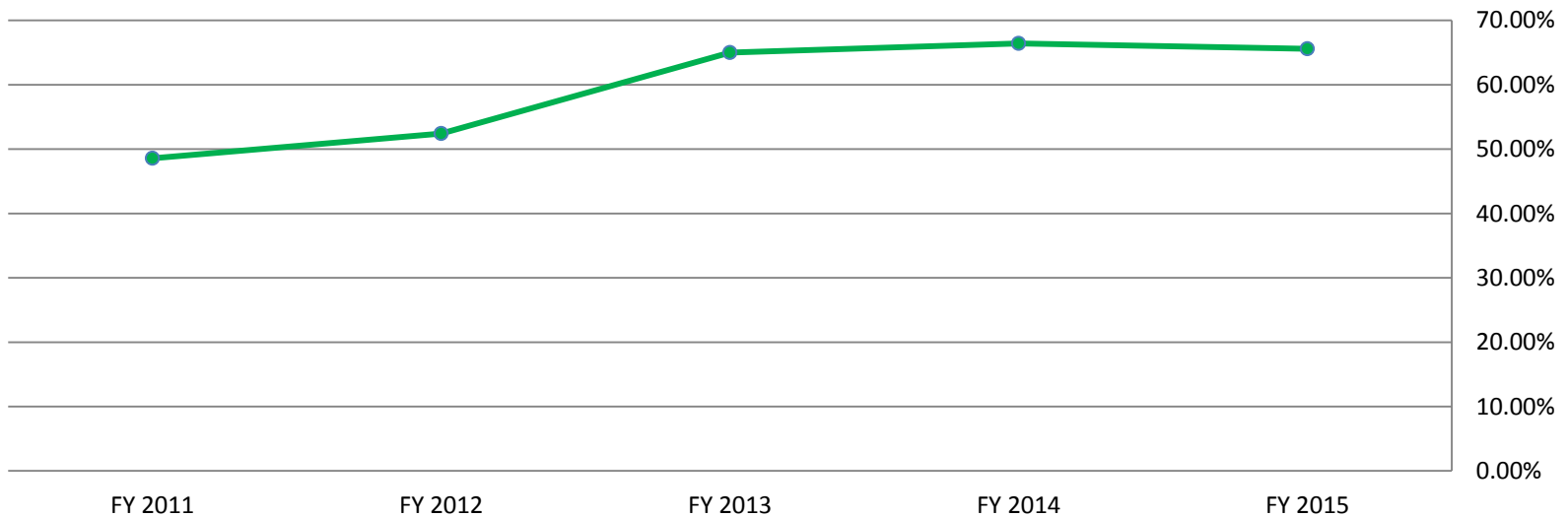
---

- Protect the public
- Provide safe and secure care and custody
- Reduce the prison population
- Reduce recidivism
- Ensure that incarcerated offenders spend their time in custody productively
- Re-Entry and Community Supervision
- Work collaboratively with outside stakeholders to achieve these goals

# Re-Entry Outcomes

**Successfully increasing the percent of probationers and parolees who satisfy court ordered conditions of release**

Percentage of Probationers and Parolees Who Successfully Satisfy Court Ordered Conditions of Release

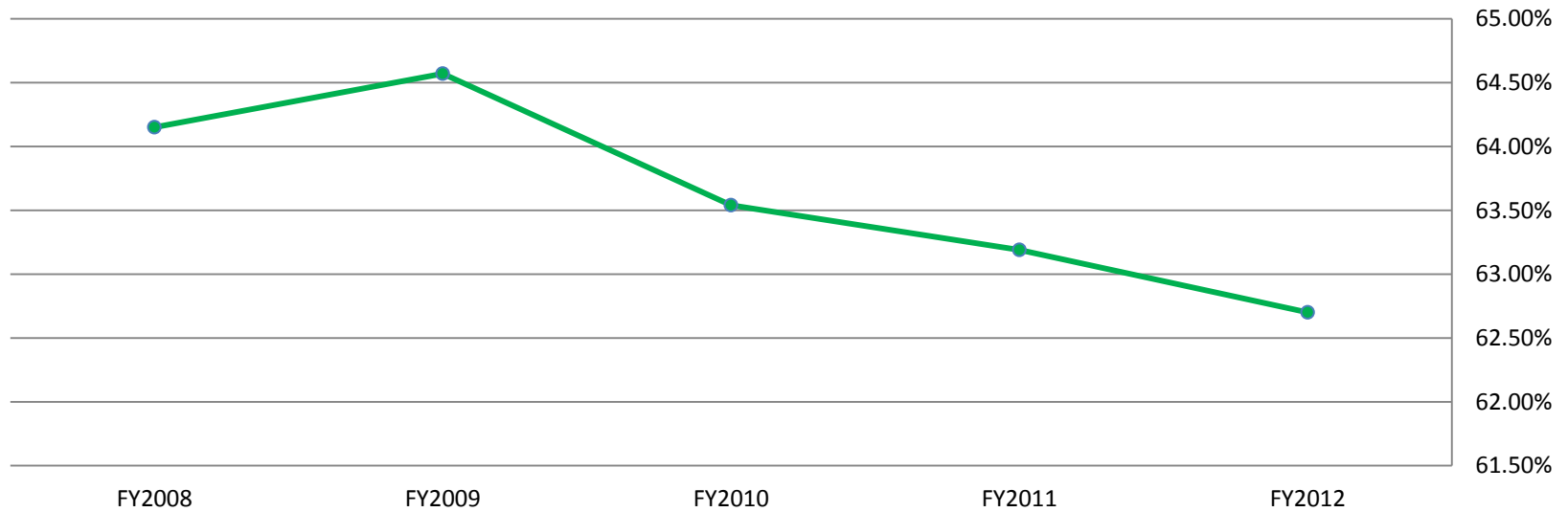


Fiscal Year	Offenders Discharged	Successful Discharges	Percentage Successful
FY 2015	1,706	1,119	65.59%
FY 2014	1,575	1,046	66.41%
FY 2013	1,658	1,078	65.01%
FY 2012	2,007	1,052	52.41%
FY 2011	1,820	884	48.57%

# Re-Entry Outcomes

## Reducing criminal recidivism

Offenders Returning to Incarceration Within 3 Years of Release



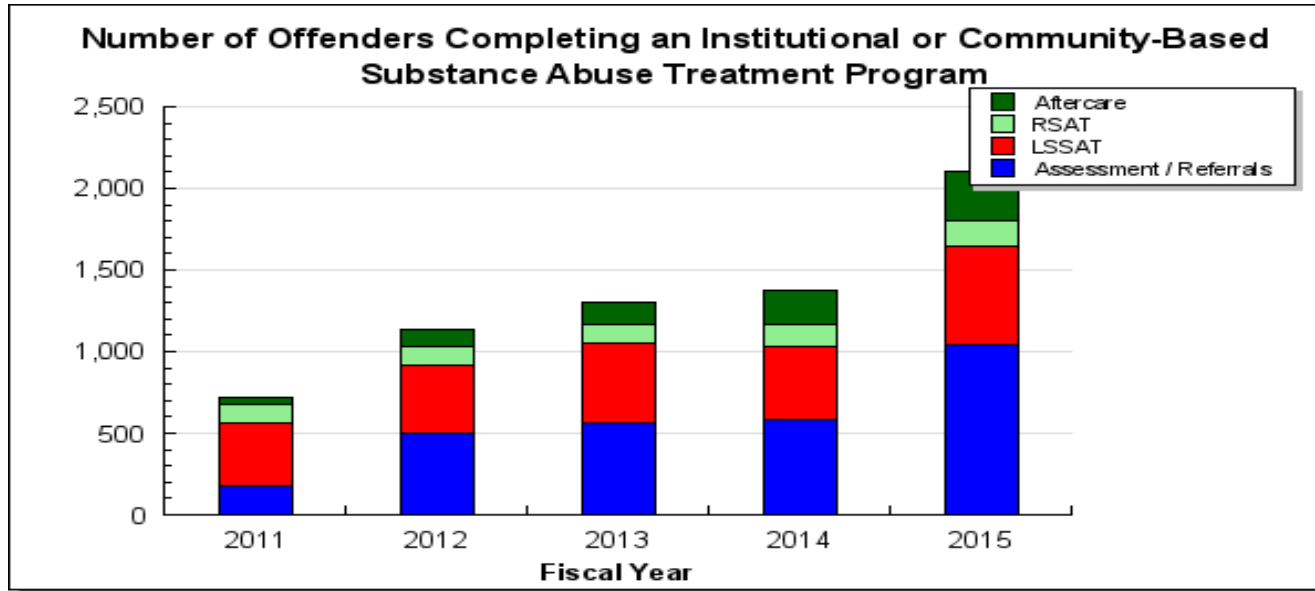
Offenders Returning to Incarceration Within 3 Years of Release

Fiscal Year	Offenders Discharged	Offenders Returned	Percent Returning
FY2012	3,657	2,293	62.70%
FY2011	3,315	2,095	63.19%
FY2010	3,700	2,351	63.54%
FY2009	3,944	2,485	64.57%
FY2008	3,964	2,543	64.15%

Recidivism is defined as any person convicted of a felony offense who is incarcerated as a result of a new sentence, parole or probation revocation within three years

# Reformative Outcomes

Increasing the number of individuals who complete an institutional or community-based substance abuse treatment program.



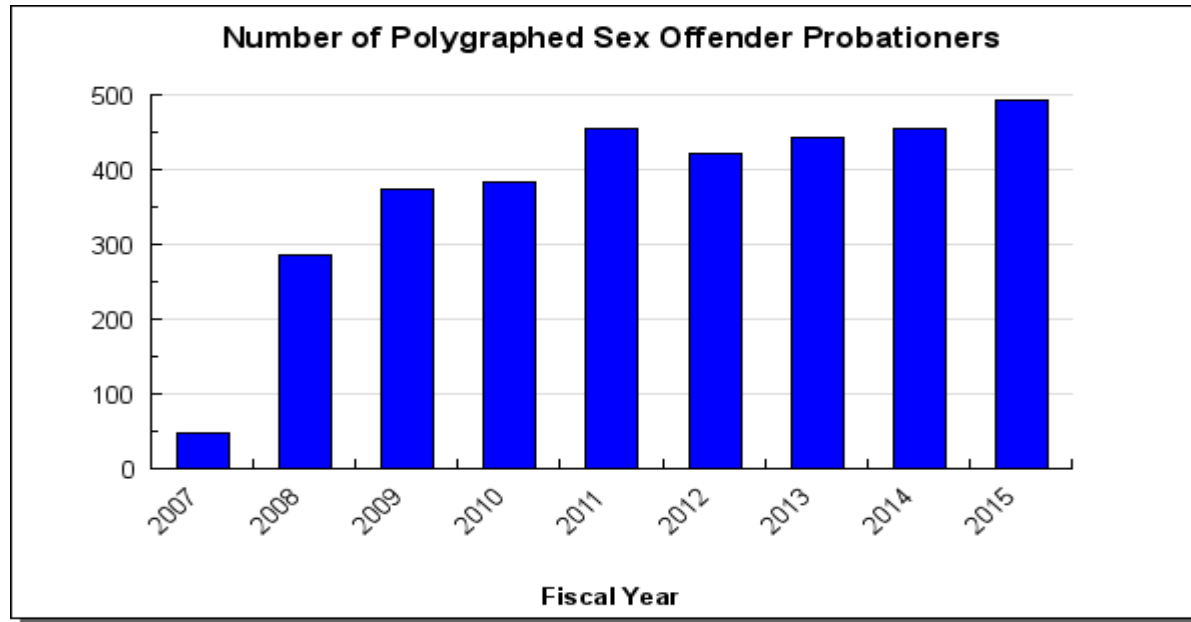
*Methodology: Information tracked and reported through the Offender Program Manager*

**Number of Offenders Completing an Institutional or Community-Based Substance Abuse Treatment Program**

Fiscal Year	Assessment / Referrals	LSSAT	RSAT	Aftercare
FY 2015	1,046	601	152	301
FY 2014	583	444	135	214
FY 2013	567	482	119	133
FY 2012	501	420	110	106
FY 2011	180	386	111	42

# Reformative Outcomes

Increasing the number of sex offender probationers who complete a sex offender management program and who receive polygraph testing while on probation.



*Methodology: Information tracked and reported through the Offender Program Manager*

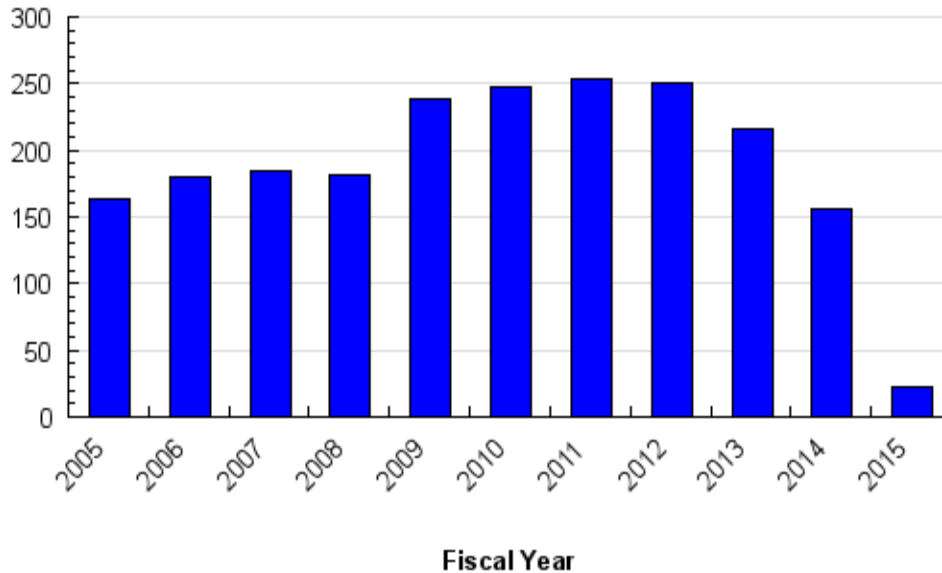
Fiscal Year	YTD Total
FY 2015	494
FY 2014	454
FY 2013	442
FY 2012	421
FY 2011	454
FY 2010	383
FY 2009	373
FY 2008	286
FY 2007	48



# Reformative Outcomes

**Increasing the number of offenders who receive a General Education Development certificate while incarcerated.**

**Number of Offenders Who Receive General Education Development While Incarcerated**



Fiscal Year	Total	% Change
FY 2015	23	-85%
FY 2014	156	-27%
FY 2013	216	-14%
FY 2012	251	-1.20%
FY 2011	254	2.80%
FY 2010	247	3.40%
FY 2009	239	31.30%
FY 2008	182	-1.60%
FY 2007	185	2.80%
FY 2006	180	9.80%
FY 2005	164	14.70%

*Converted to an electronic testing system January 2014.*

*There have been 29 offenders who have received a GED during FY2016 through December 31, 2016.*

# Challenges and Issues

---

- Meet 24/7 operational needs while striving to remain within fiscal parameters
- Connect soon to be released offenders to community-based resources
- Female population growth
- Increasing mentally ill population

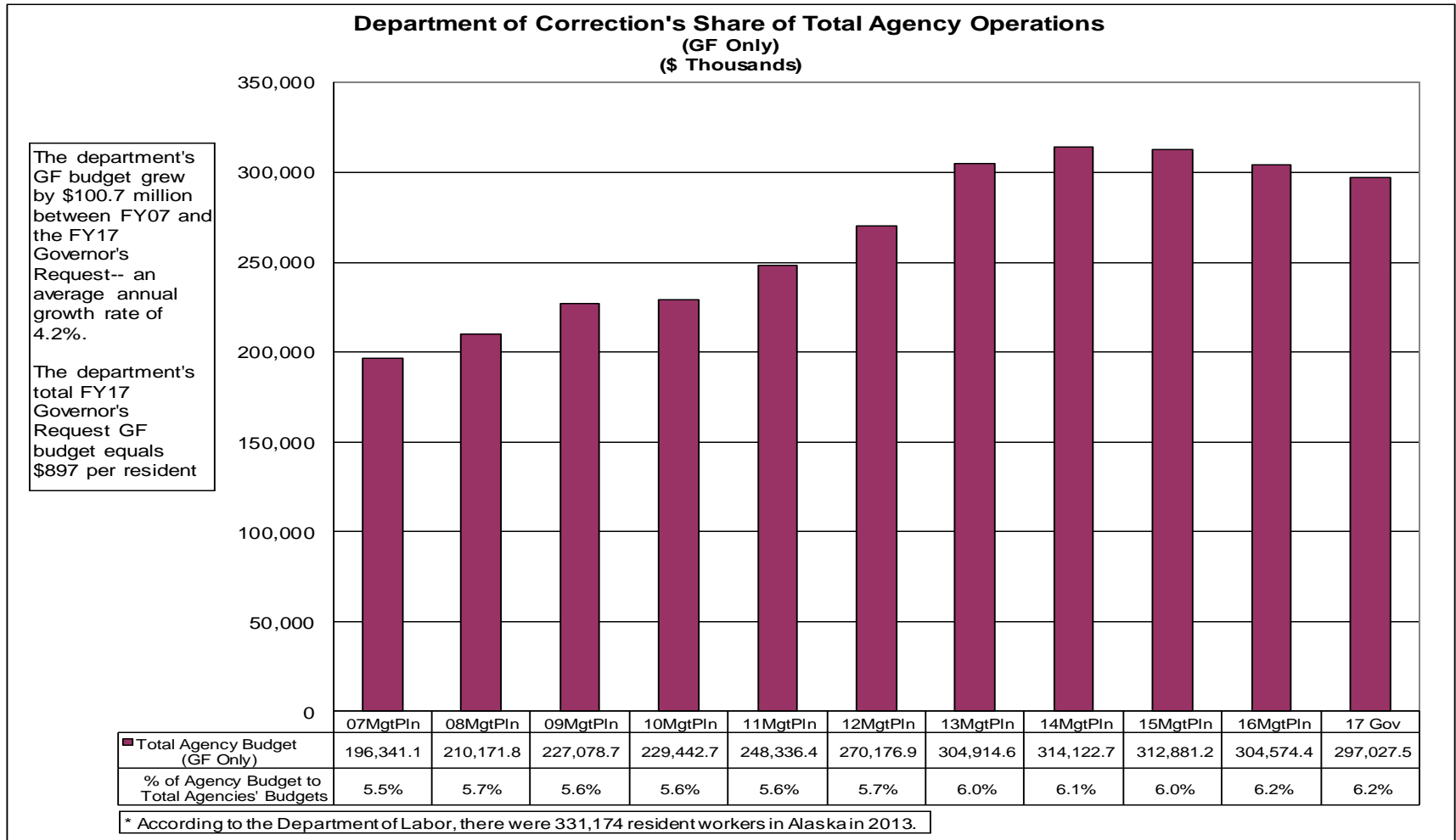
# Challenges and Issues (Continued)

---

- Anchorage medical care costs have increased by another 3.2% from 2014 to 2015. Alaska medical care costs increased .8% more than the U.S. National average of 2.4%. (*Alaska Economic Trends, July 2015*)
- Increases in chronic health issues and an aging inmate population continue to increase the need for higher acuity and specialized medical care

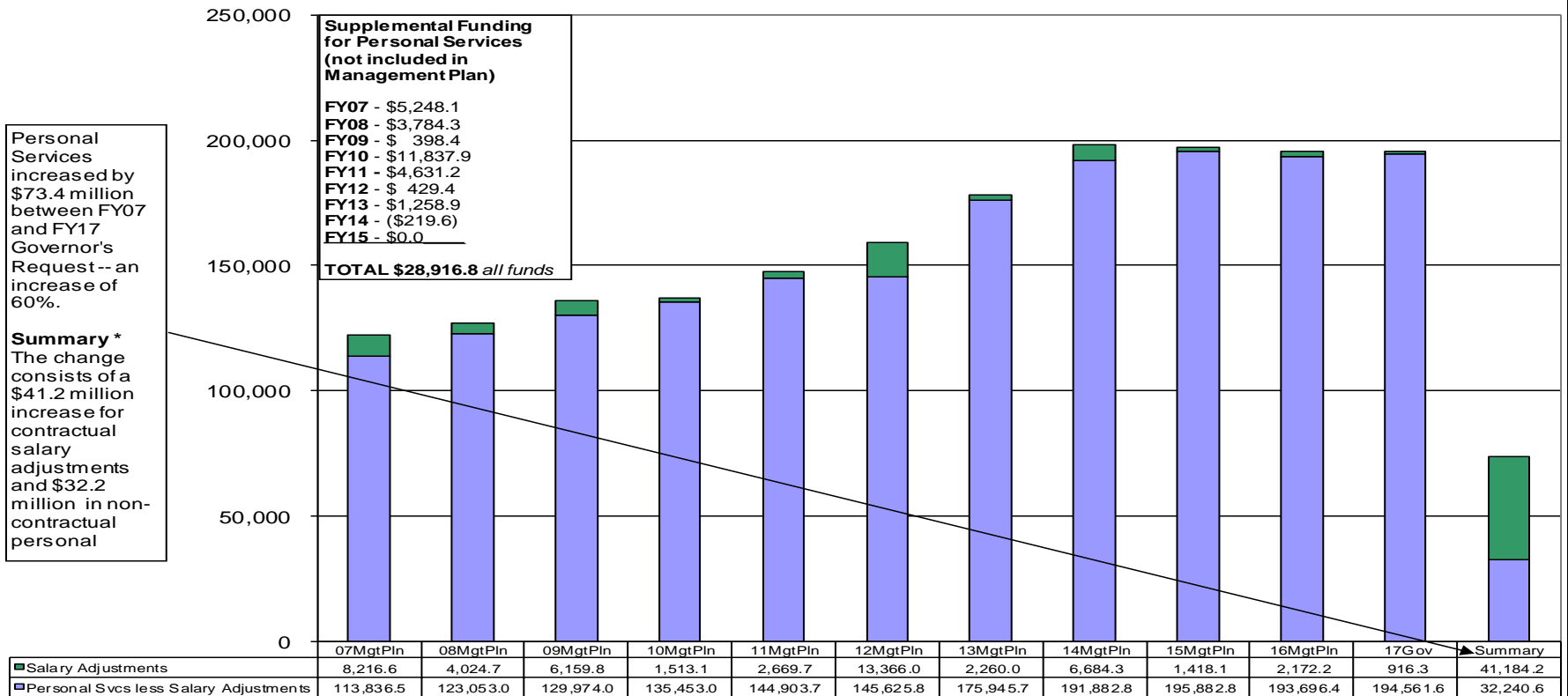
# Department of Corrections

## FY2017 GF % of all Agencies



# Department of Corrections FY2017 Salary Adjustment Increases and Personal Services Costs

**Department of Corrections**  
**Salary Adjustment Increases and Personal Services Costs**  
 (All Funds)  
 (\$ Thousands)



\*The numbers in this column highlight the total change in the personal services line from FY07 to FY17 Governor's Request and breaks it into two parts: (1) the change attributable to approved salary adjustments (primarily due to existing employees' salary negotiations), and (2) other personal services increases (perhaps from transfers between line items or increases from new positions).

# Department of Corrections

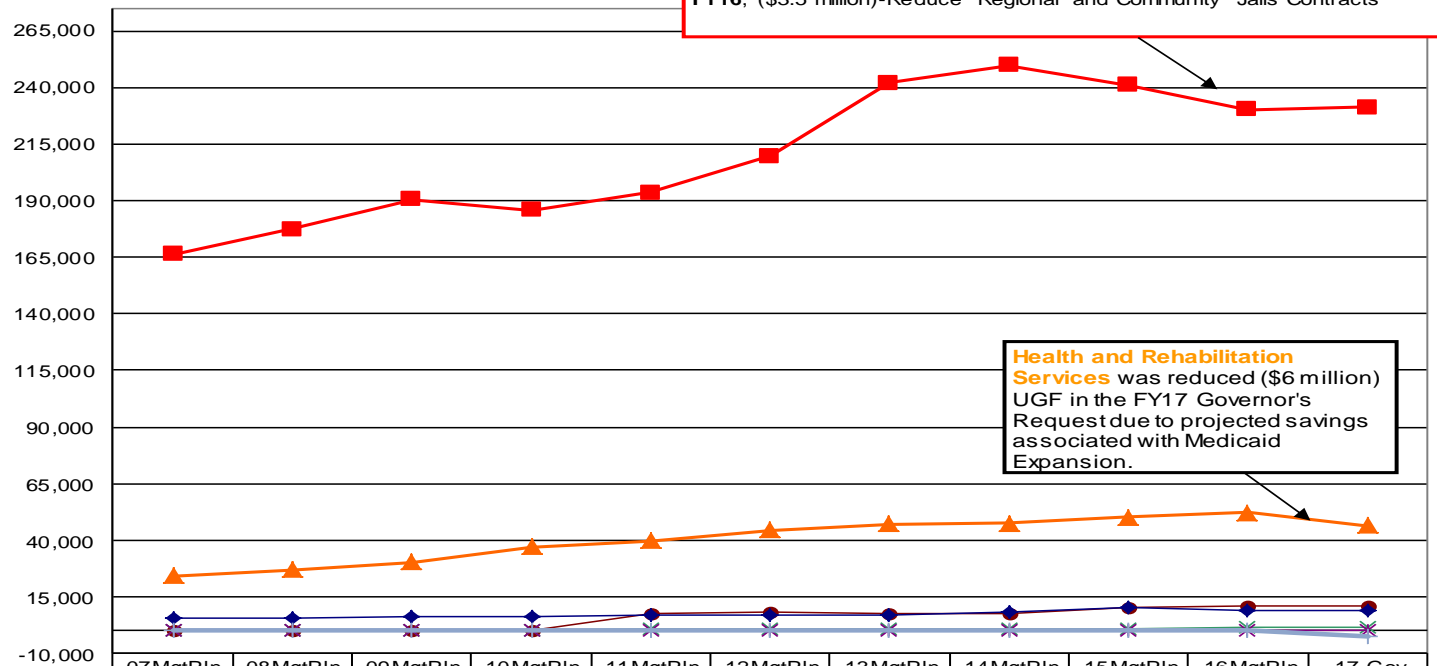
## FY2017 GF Appropriated

### GF % Increase

Between FY07Mgmt Plan and FY17 Governor's Request, funding for **Population Management** has increased 38%, **Health and Rehab Services** has increased 91%, and **Administration and Support** has increased 54%.

### Appropriations within the Department of Corrections (GF Only) (\$ Thousands)

**FY14-FY17 - Population Management:** After peaking in FY14 with the opening of Goose Creek (GCCC), the Population Mgmt. appropriation has decreased by \$18.5 million UGF (7.4%). Significant reductions include: **FY15**, (\$2.5 million) - Combine Pt. MacKenzie Correctional Farm with GCCC **FY16**, (\$3 million)-2% Institution-Wide Reduction **FY16**, (\$2.4 million)-Portion of Agency-Wide Unallocated **FY16**, (\$3.5 million)-Reduce Regional and Community Jails Contracts



**Health and Rehabilitation Services** was reduced (\$6 million) UGF in the FY17 Governor's Request due to projected savings associated with Medicaid Expansion.

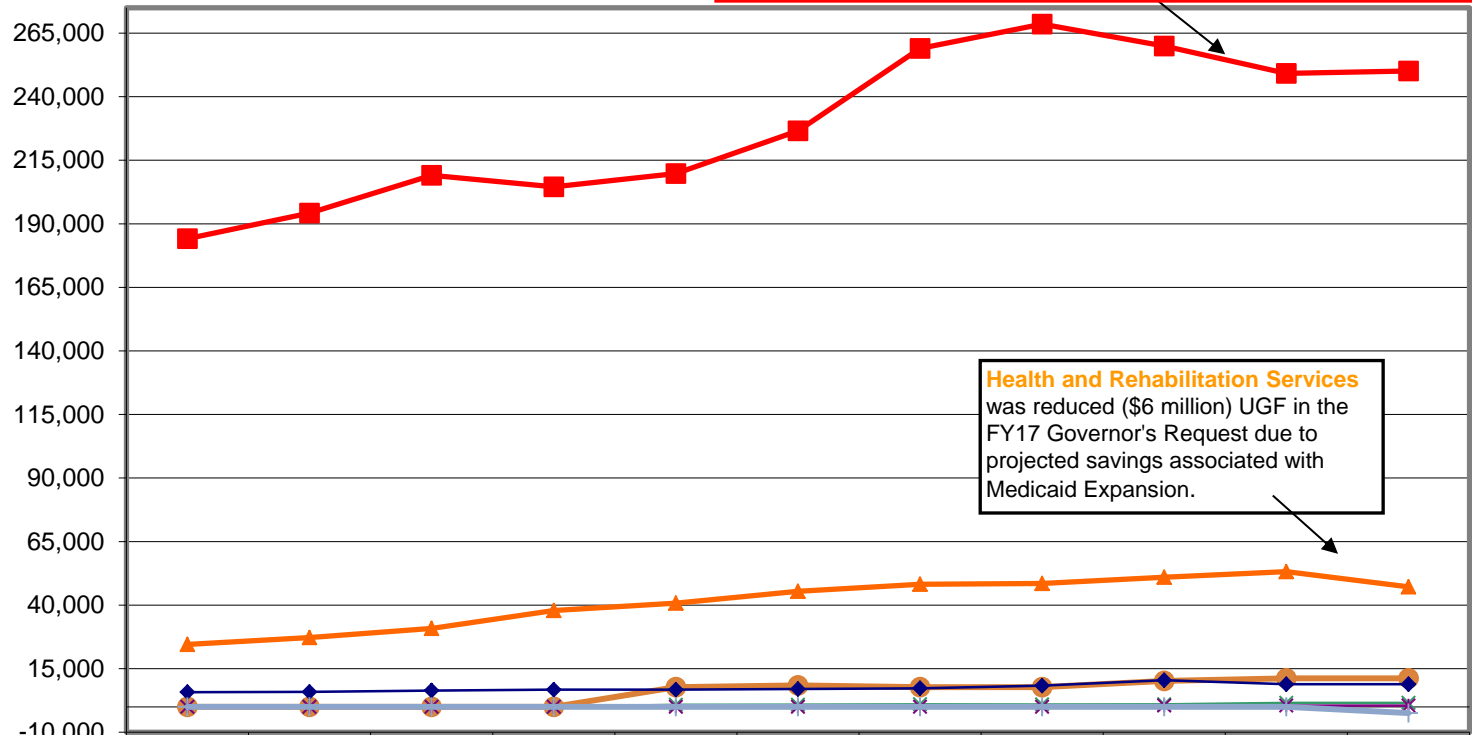
	07MgtPIn	08MgtPIn	09MgtPIn	10MgtPIn	11MgtPIn	12MgtPIn	13MgtPIn	14MgtPIn	15MgtPIn	16MgtPIn	17 Gov
Population Management	166,435.8	177,427.2	190,487.0	185,749.8	193,420.3	209,673.8	242,061.7	249,741.3	240,932.5	230,340.5	231,243.7
Health and Rehabilitation Services	24,242.1	27,001.3	30,313.6	37,241.5	39,894.7	44,511.2	47,133.9	47,634.5	50,083.3	52,376.7	46,376.7
24 Hour Institutional Utilities	-	-	-	-	7,724.2	8,444.2	7,724.2	7,724.2	10,224.2	11,224.2	11,224.2
Administration and Support	5,663.2	5,743.3	6,278.1	6,451.4	6,649.9	6,892.8	7,178.4	8,201.8	10,321.4	8,733.6	8,733.6
Offender Habilitation	-	-	-	-	647.3	654.9	816.4	820.9	819.8	1,399.4	1,399.4
Recidivism Reduction Grants	-	-	-	-	-	-	-	-	500.0	500.0	500.0
Agency Unallocated Appropriation	-	-	-	-	-	-	-	-	-	-	(2,450.1)

### All Funds% Increase

Between FY07Mgmt Plan and FY17 Governor's Request, funding for **Population Management** (all funds) has increased 36%, **Health and Rehab Services** has increased 92%, and **Administration and Support** has increased 54%.

### Appropriations within the Department of Corrections (All Funds) (\$ Thousands)

**FY14-FY17 - Population Management** After peaking in FY14 with the opening of Goose Creek (GCCC), the Population Management appropriation has decreased by \$18.5 million UGF (7.4%). Some of the significant reductions include:  
**FY15**, (\$2.5 million)-Combine Pt. MacKenzie Correctional Farm with GCCC  
**FY16**, (\$3 million) - 2% Institution-Wide Reduction  
**FY16**, (\$2.4 million) - Portion of Agency-Wide Unallocated  
**FY16**, (\$3.5 million) - Reduce Regional and Community Jails Contracts



**Health and Rehabilitation Services** was reduced (\$6 million) UGF in the FY17 Governor's Request due to projected savings associated with Medicaid Expansion.

	07MgtPln	08MgtPln	09MgtPln	10MgtPln	11MgtPln	12MgtPln	13MgtPln	14MgtPln	15MgtPln	16MgtPln	17Gov
Population Management	184,145.2	194,222.2	209,055.0	204,519.5	209,755.6	226,583.4	259,013.0	268,570.4	259,908.5	249,170.9	250,087.2
Health and Rehabilitation Services	24,529.5	27,263.7	30,868.0	37,912.3	40,789.6	45,467.8	48,180.3	48,520.1	50,962.2	53,200.8	47,200.8
24 Hour Institutional Utilities	0.0	0.0	0.0	0.0	7,724.2	8,444.2	7,724.2	7,724.2	10,224.2	11,224.2	11,224.2
Administration and Support	5,774.6	5,854.7	6,414.5	6,746.7	6,761.3	7,004.2	7,289.8	8,313.2	10,469.5	8,882.4	8,882.4
Offender Habilitation	0.0	0.0	0.0	0.0	815.3	822.9	984.4	938.9	976.1	1,555.7	1,555.7
Recidivism Reduction Grants	0.0	0.0	0.0	0.0	0.0	0.0	0.0	0.0	500.0	500.0	500.0
Agency Unallocated Appropriation	0.0	0.0	0.0	0.0	0.0	0.0	0.0	0.0	0.0	0.0	(2,450.1)



# Alaska Department of Corrections



**Thank You**  
**Questions?**